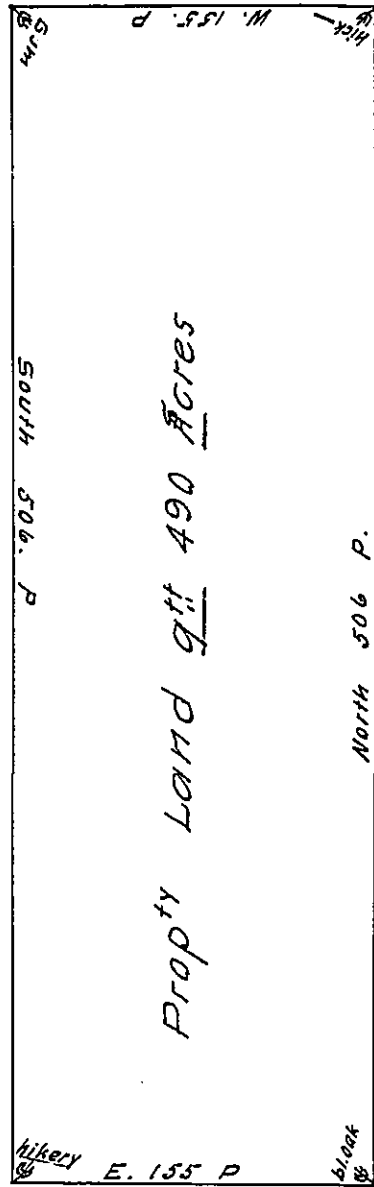


John Richardsons Land



Ebenezer Empson Land

By virtue of a Warrant to me directed dated the 7th day of the first month 1701

I have surveyed for ye Prop^{ty} a tract of land in Nottingham beginning at a black oak corner tree thence by Ebenezer Empsons land North 506 p^{ch} to a corner hickery thence West 155 p^{ch} to a corner gum being a corner of John Richardsons land thence by his line South 506 p^{ch} to a corner hickery thence Est 155 p^{ch} to the place of beginning containing 490 acres of land ye 13th 3-m. 1702

Henry Hollingsworth

IN TESTIMONY that the above is a copy of the original remaining on file in the Department of Internal Affairs of Pennsylvania, made conformably to an Act of Assembly approved the 16th day of February, 1833, I have hereunto set my Hand and caused the Seal of said Department to be affixed at Harrisburg, this twenty second day of April 1910

Henry Horck
Secretary of Internal Affairs.